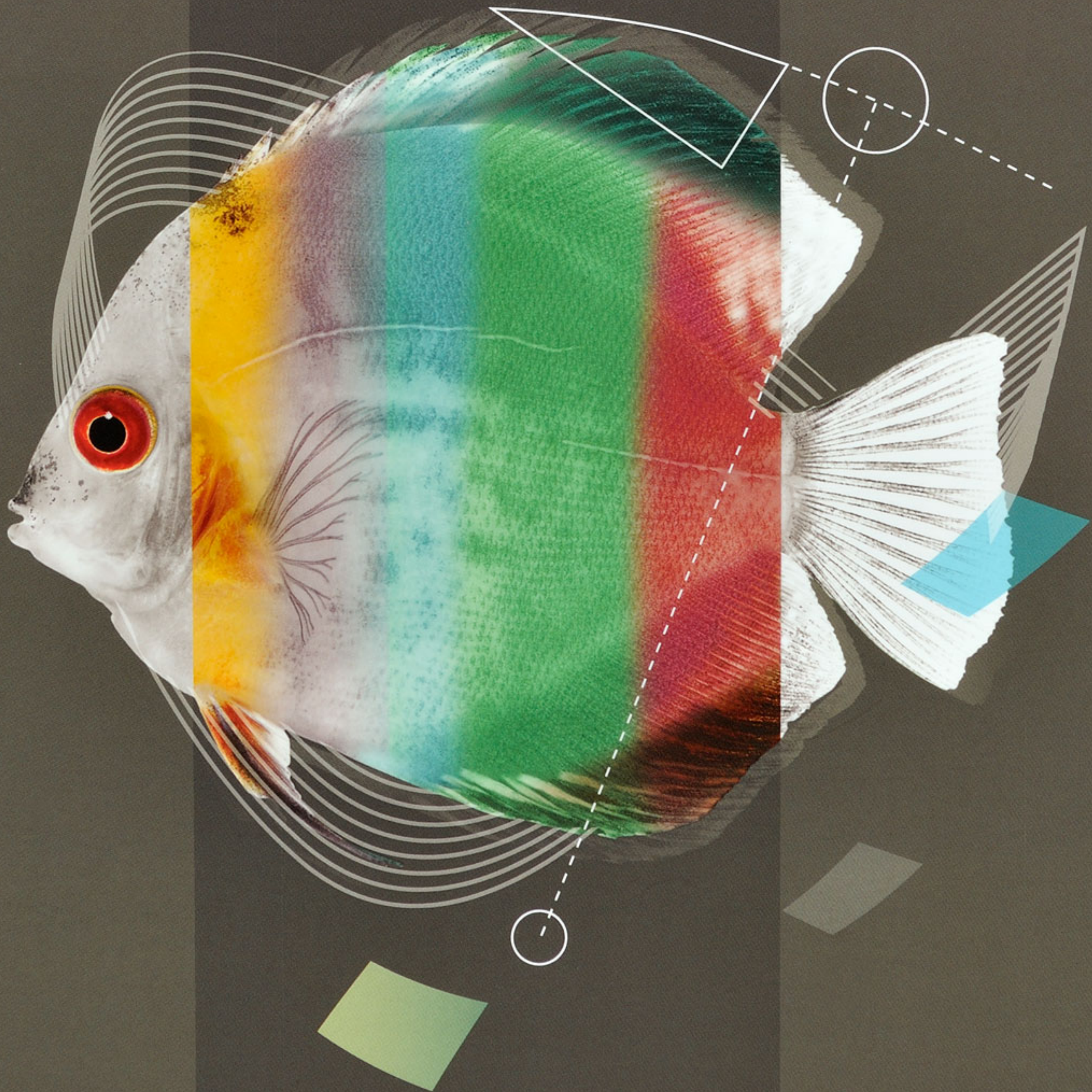


ELVAL COLOUR
Power to imagine



PREMIUM METALLIC COLOUR GUIDE with UNLIMITED POTENTIAL



Living metal colours

Elval Colour is a leading European coil coating supplier with a production of more than 35 million m² per year. With over 40 years of experience in coating and colour matching, Elval Colour is an excellent partner for your projects.

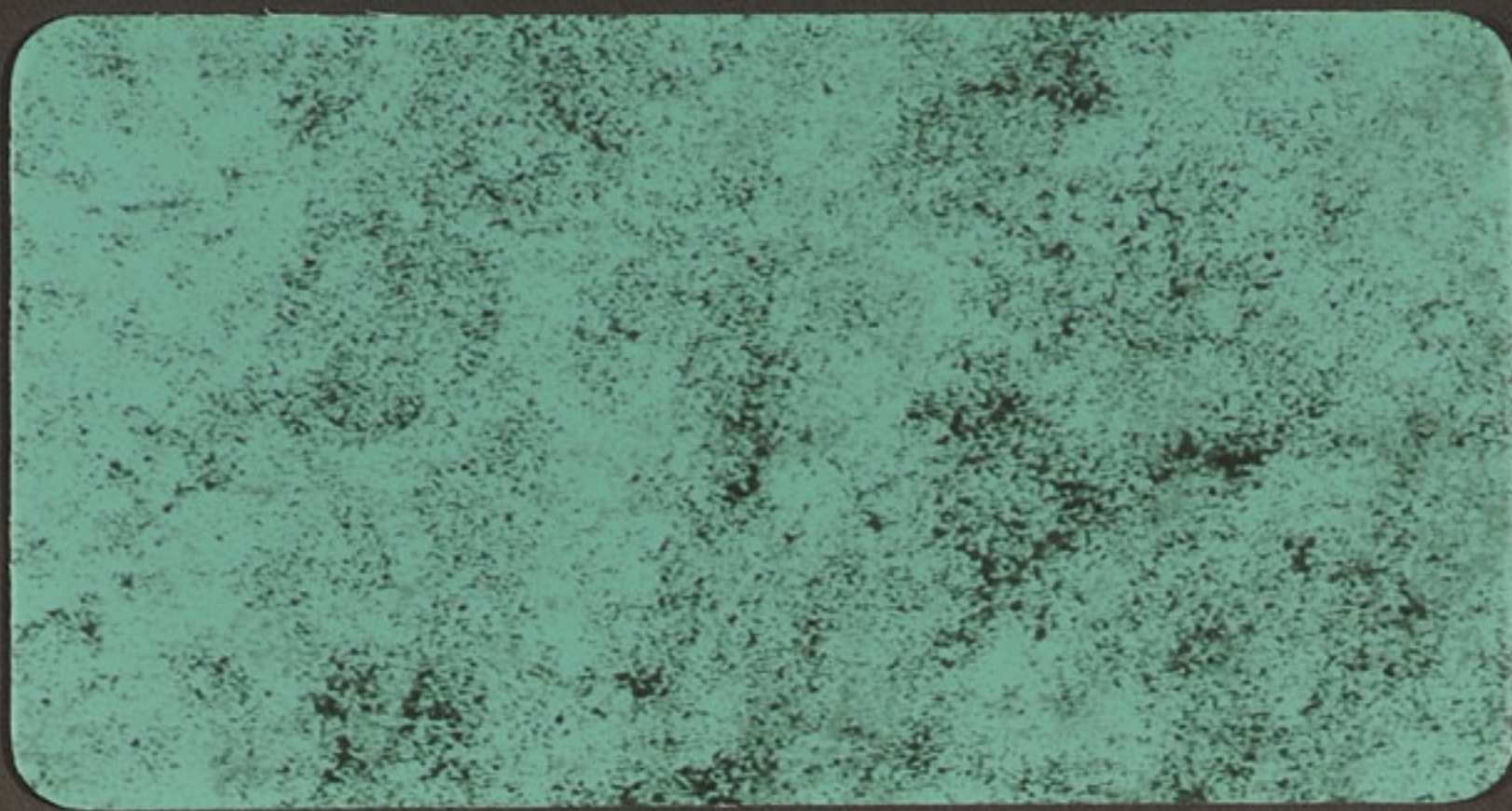
Elval Colour is member of the European Coil Coating Association (ECCA), the European Aluminium Association, and is ISO 9001-2008, ISO 14001-2004 and OHSAS 18001 certified.

Elval Colour's coated aluminium products are available in various colour shades presenting a wide selection of standard or custom made solutions for the building envelope. Applied by a sophisticated continuous coil coating process, our multilayer paint systems offer superior appearance and advanced resistance to aggressive weather conditions, polluted environments and UV-radiation.

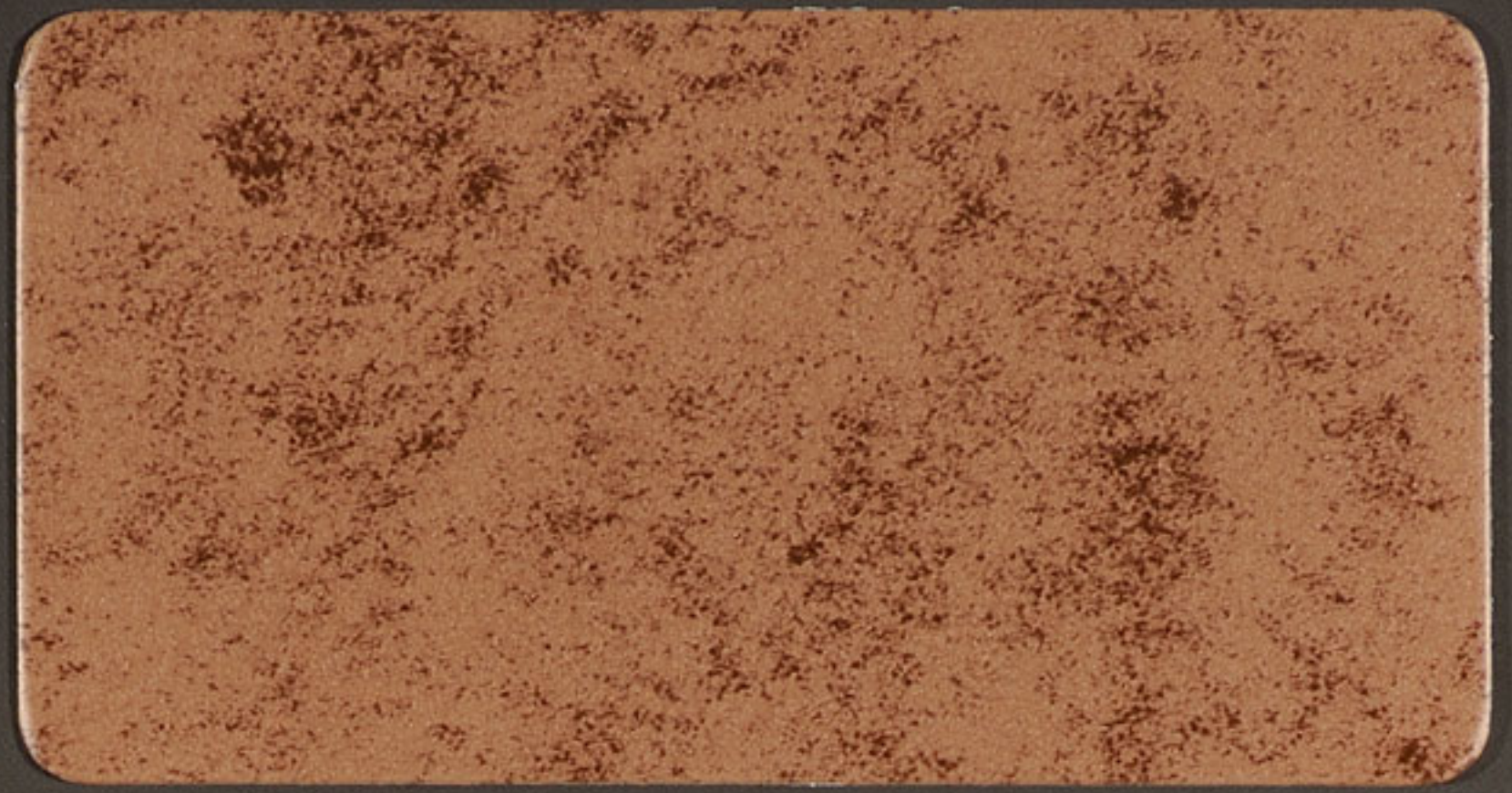


ELVAL COLOUR
Power to imagine

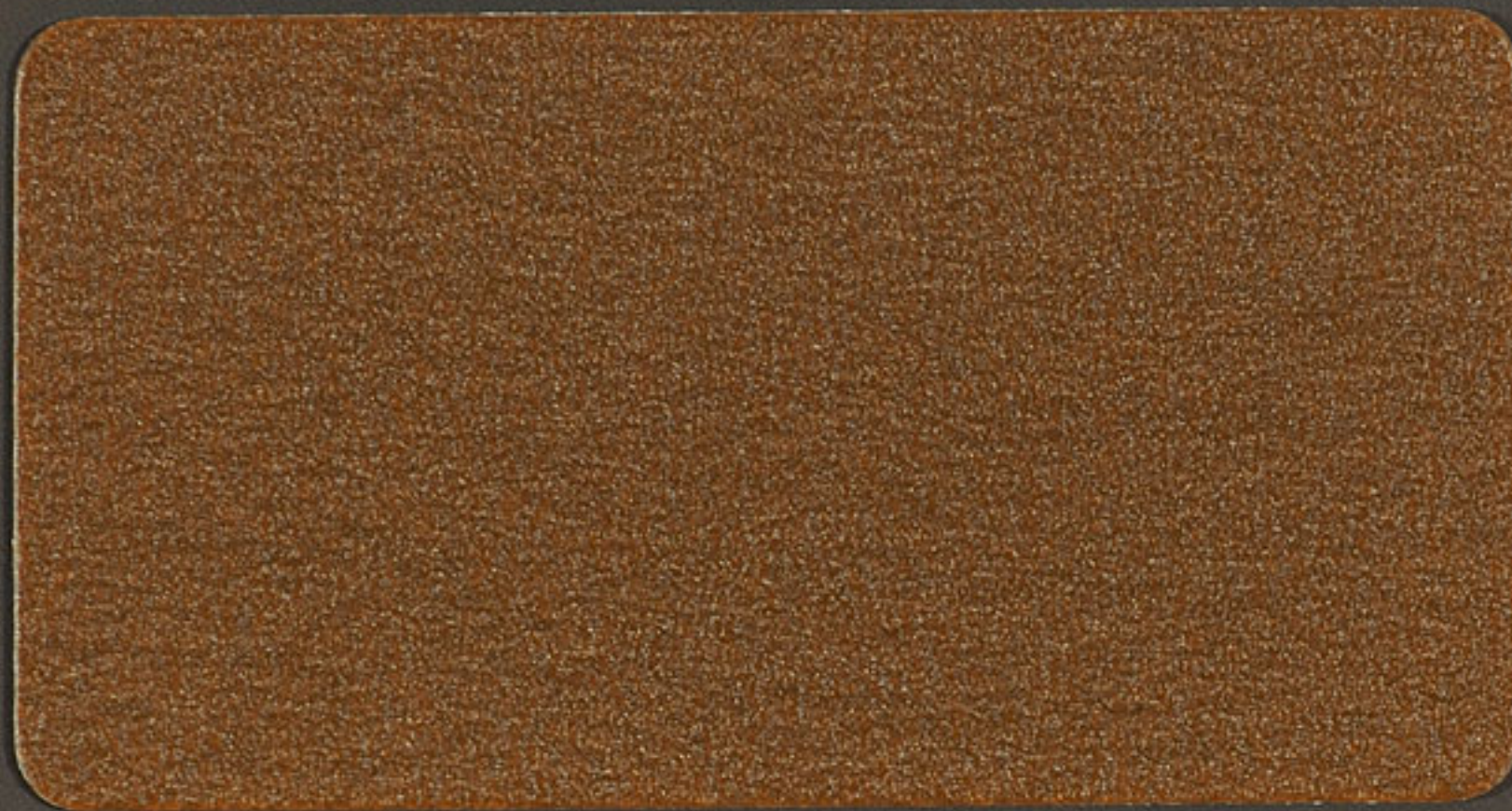
PREMIUM METALLIC COLOUR GUIDE COLOUR SHADE SOLUTIONS



905 Patina Verde



906 Patina Rame



915 Corten



914 Corten



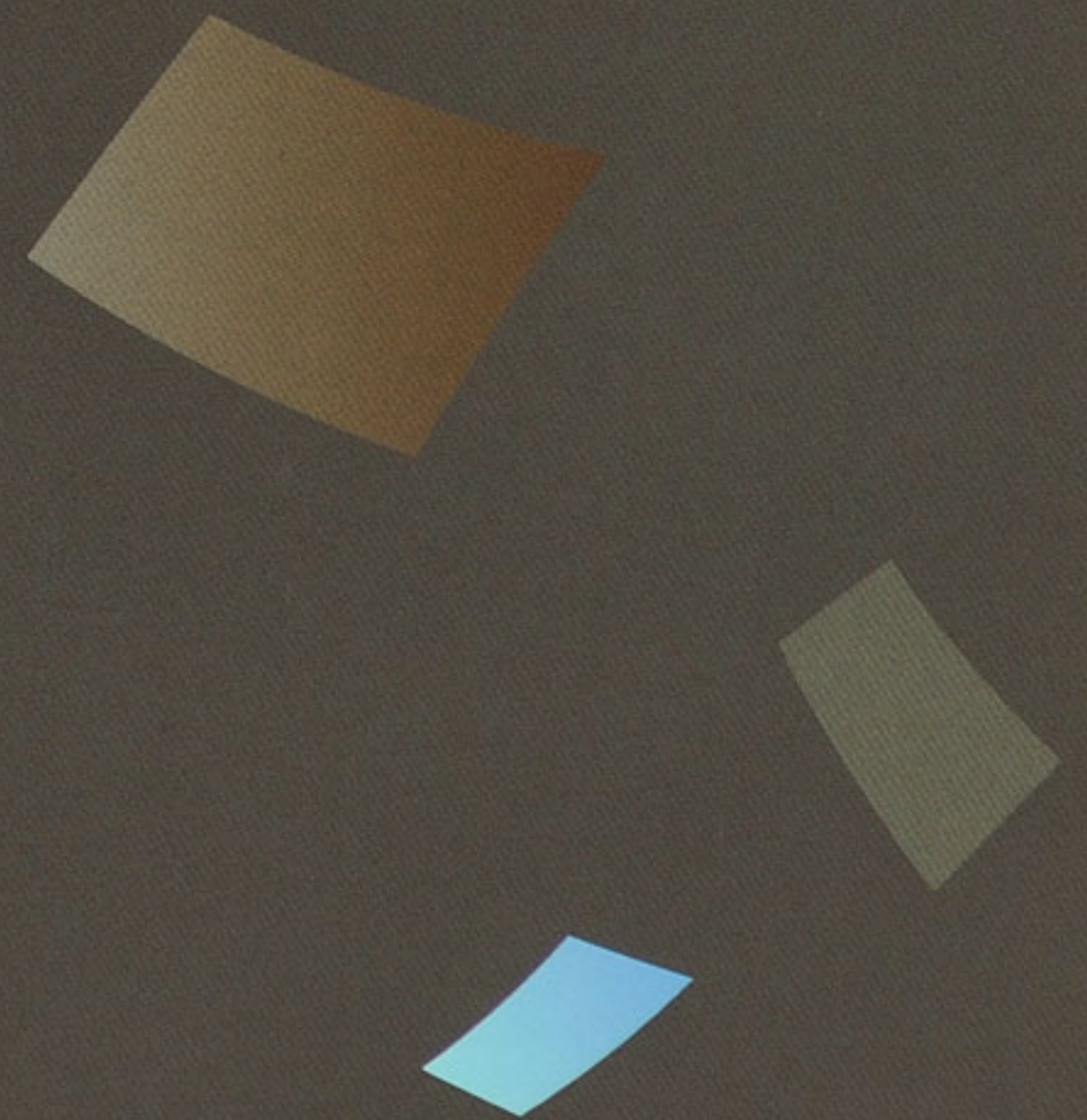
928 Zinc Light Brown



929 Zinc Dark Brown

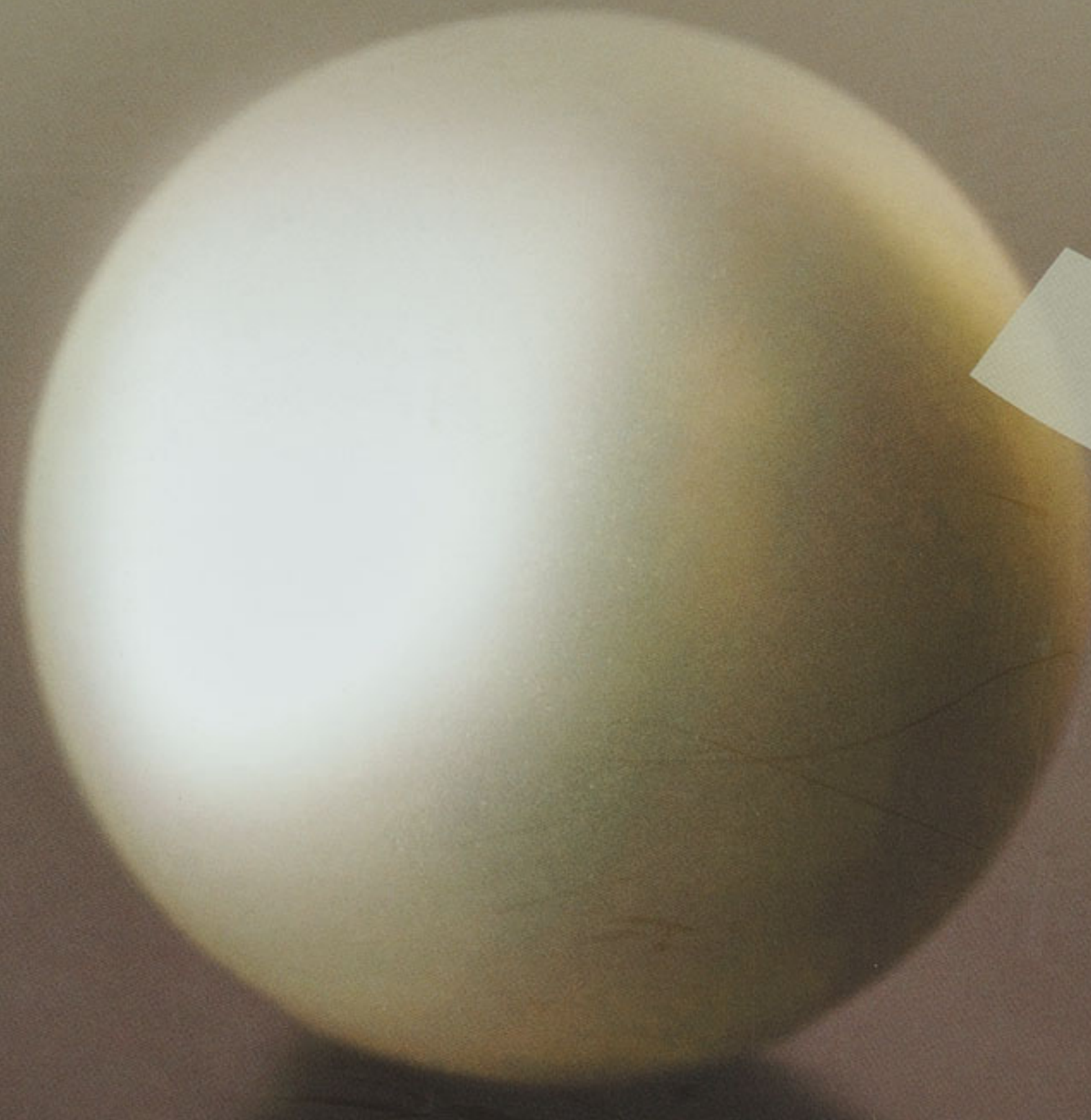


962 Zinc Light Grey



A friend to the environment

- Elval Colour products are available in a wide range of colours and coatings to match all building envelope façade & roofing requirements. From scratch resistant to superior weathering performance and from vibrant to conservative shades ready to contribute to any architectural vision.
- Elval Colour uses coatings that are
 - Lead (Pb), Chrome (Cr) and Isophorone (IF) Free
 - REACH compliant as per 1907/2006/EU
 - RoHS compliant as per the Restriction of Hazardous Substances Directive 2002/95/EU
- Our coating process complies with all European norms and quality standards DIN, ASTM, BS, EN, ISO and ECCA, has a zero liquid waste discharge system and is fully compliant with the Industrial Emissions' Directive (IED) 2010/75/EU.



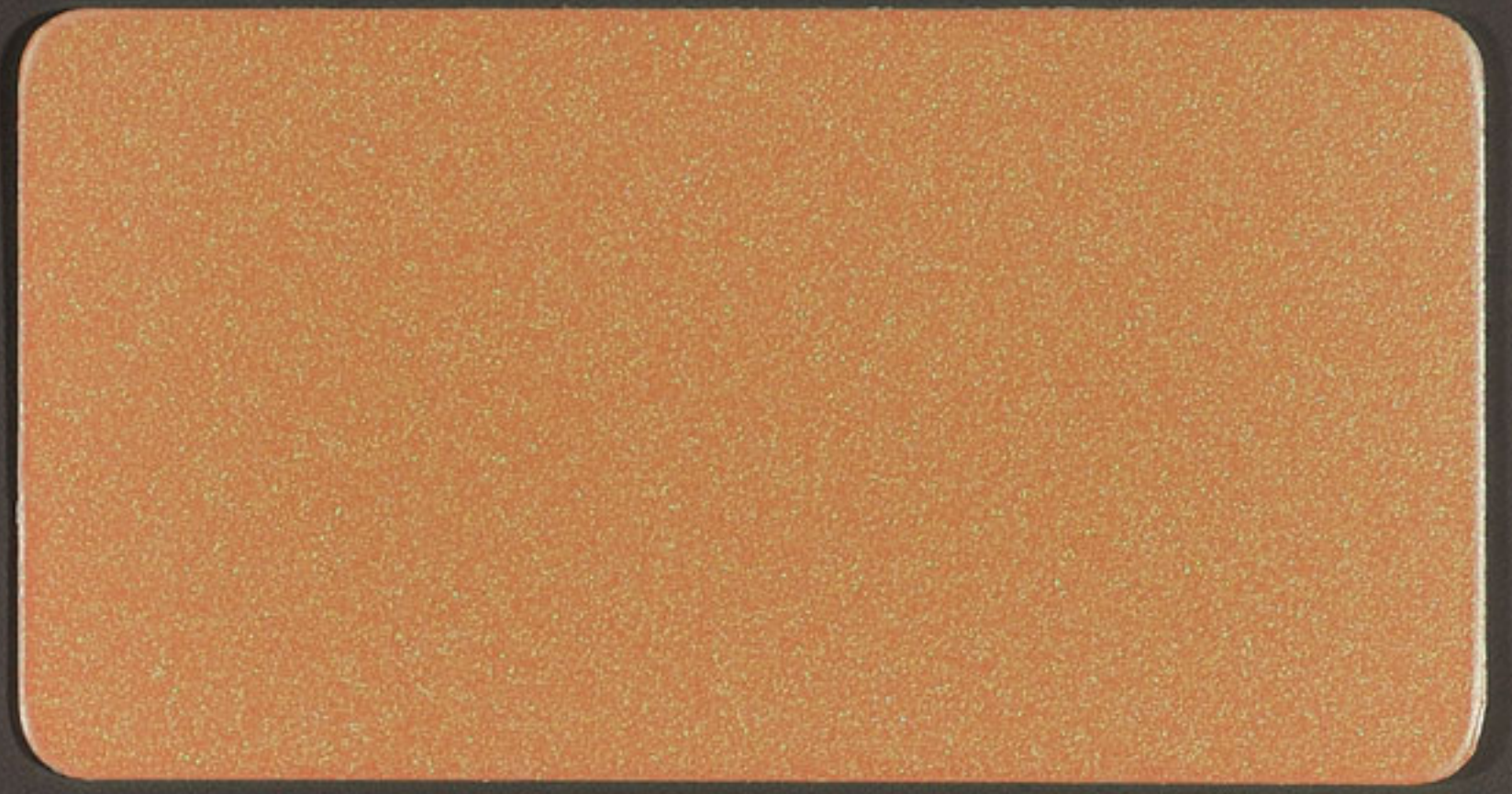
952 Silver Ivoir

Your Partner in unique façade creation

Our specialized personnel will assist you in identifying and implementing the best possible coating system for your building. Cost, quality, aesthetics and speed of delivery will be all optimized with a view to maximize the performance, weathering resistance, and visual impact of your project. For more information & guidelines, please contact www.elval-colour.com/en/contact



947 Black Copper



702 Orange Gold



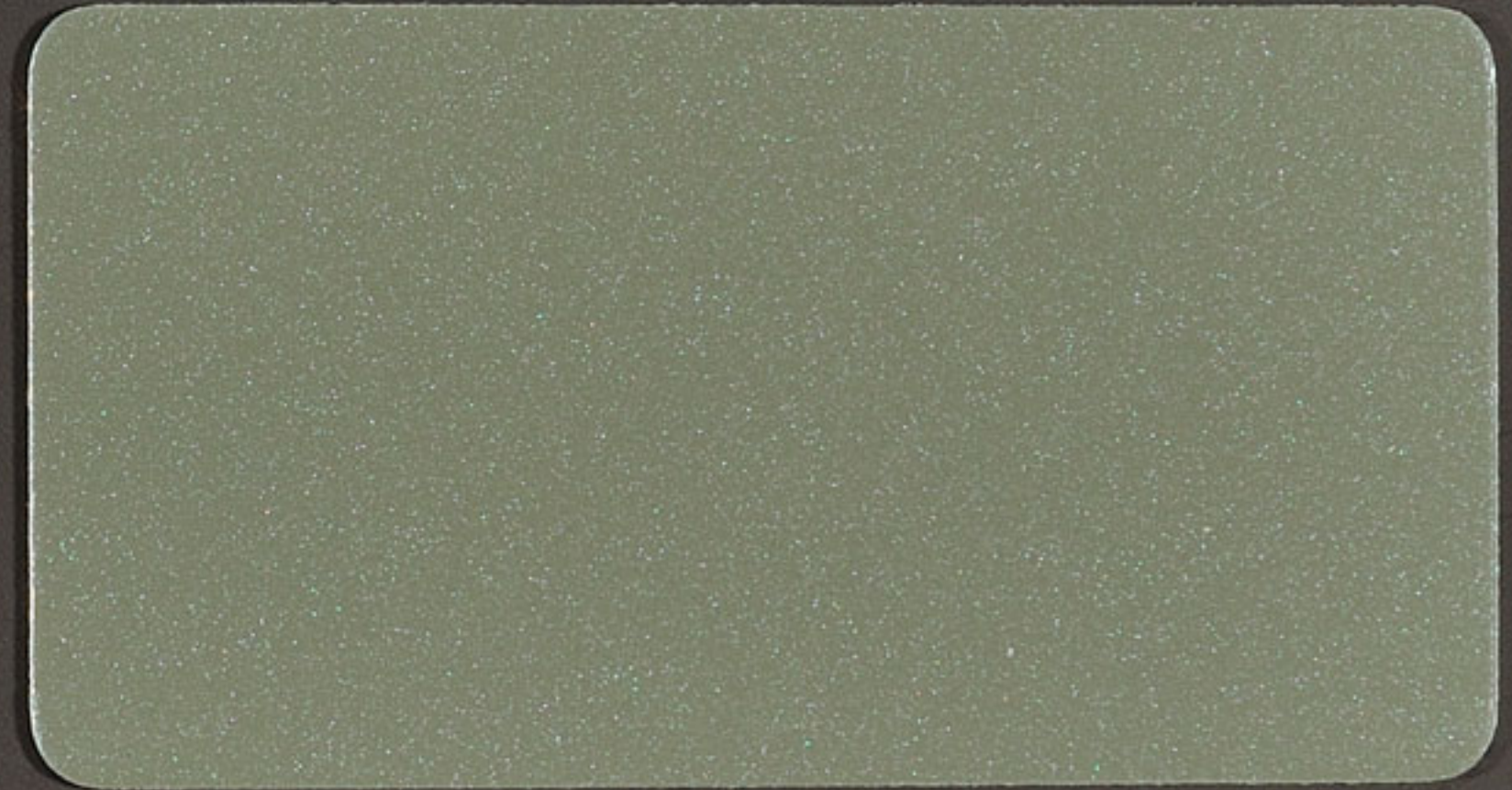
952 Silver Ivoir



949 Sky Blue



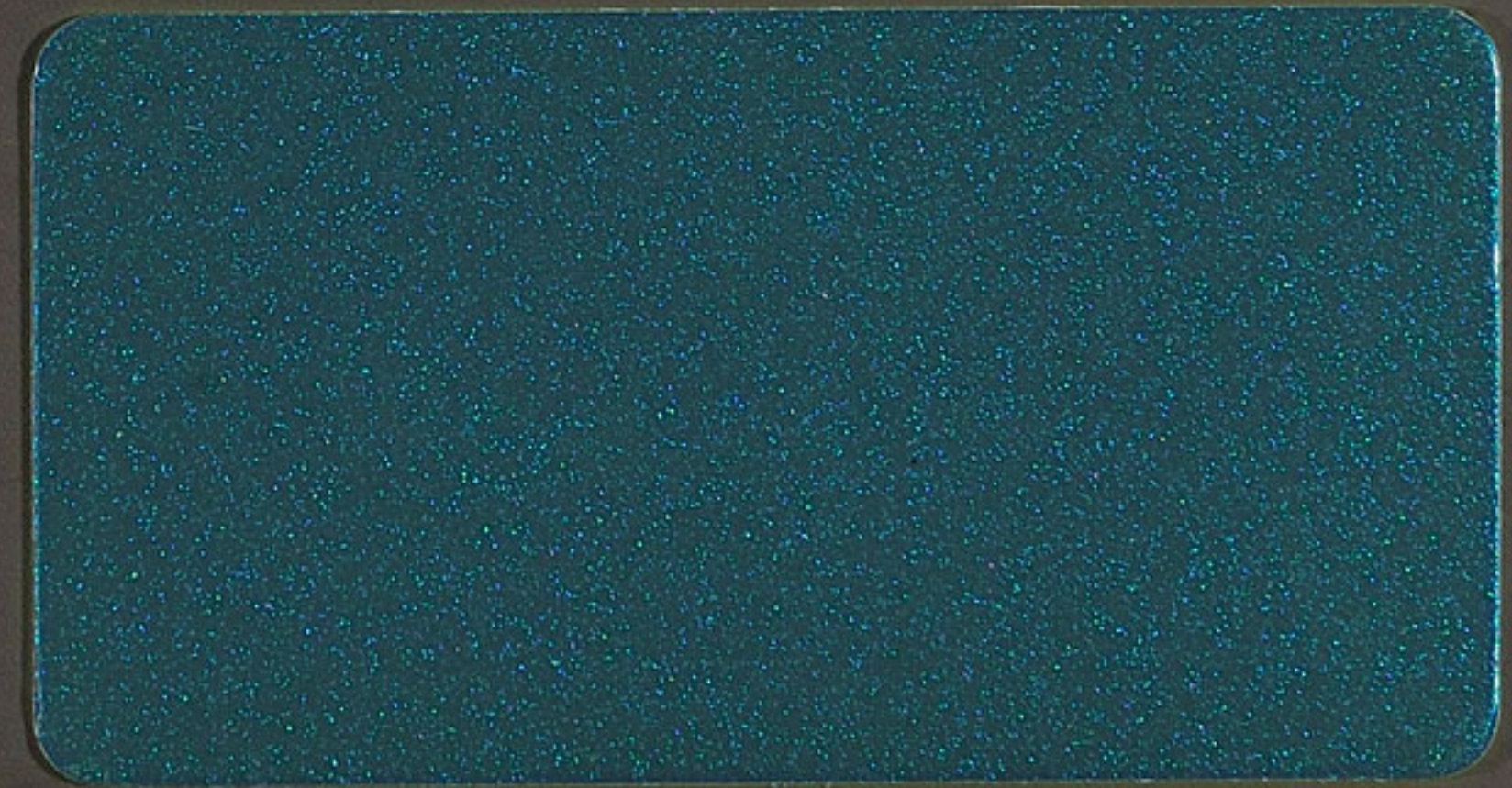
945 Pyr - Gold Silver



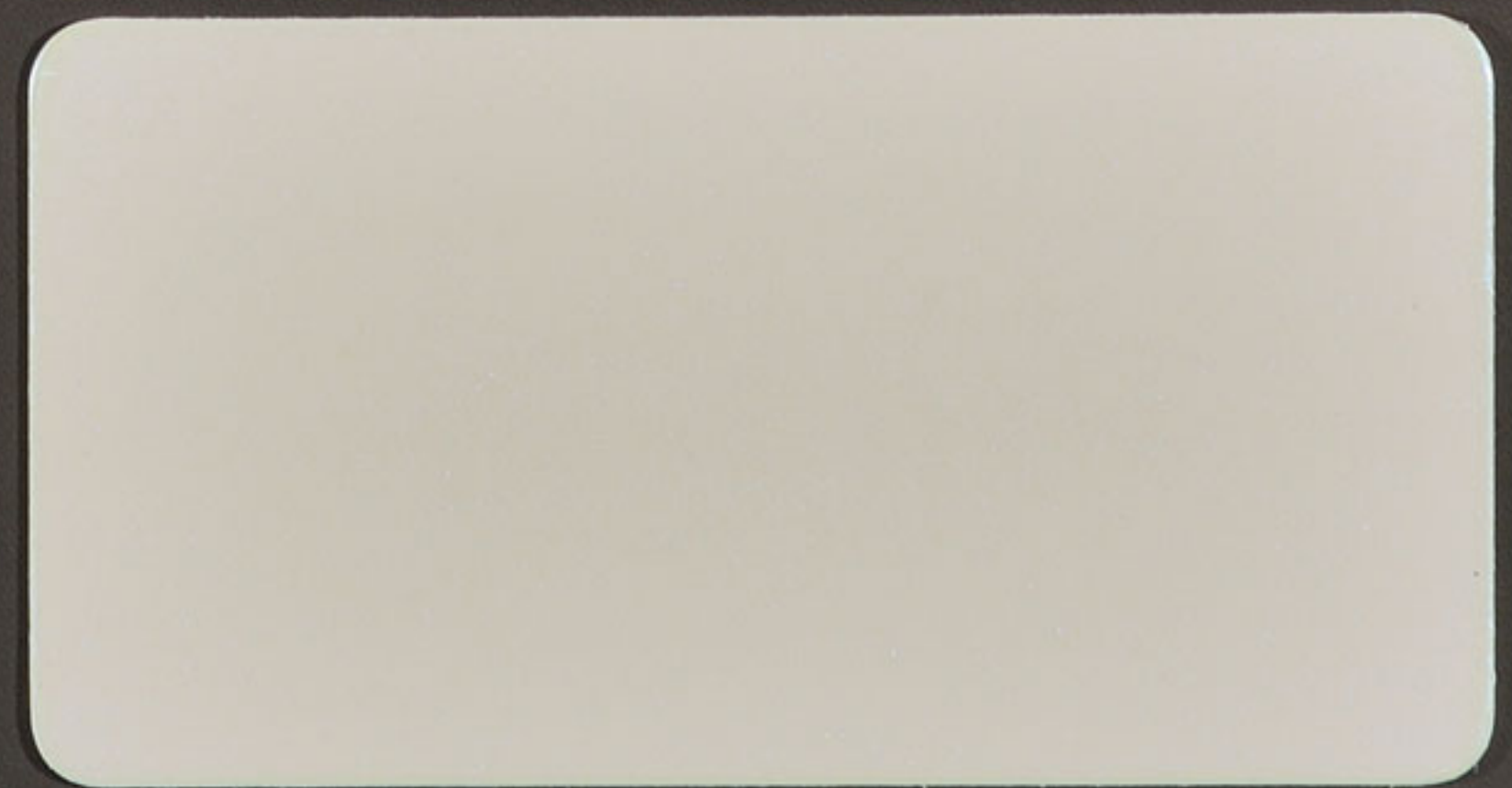
948 Sakura



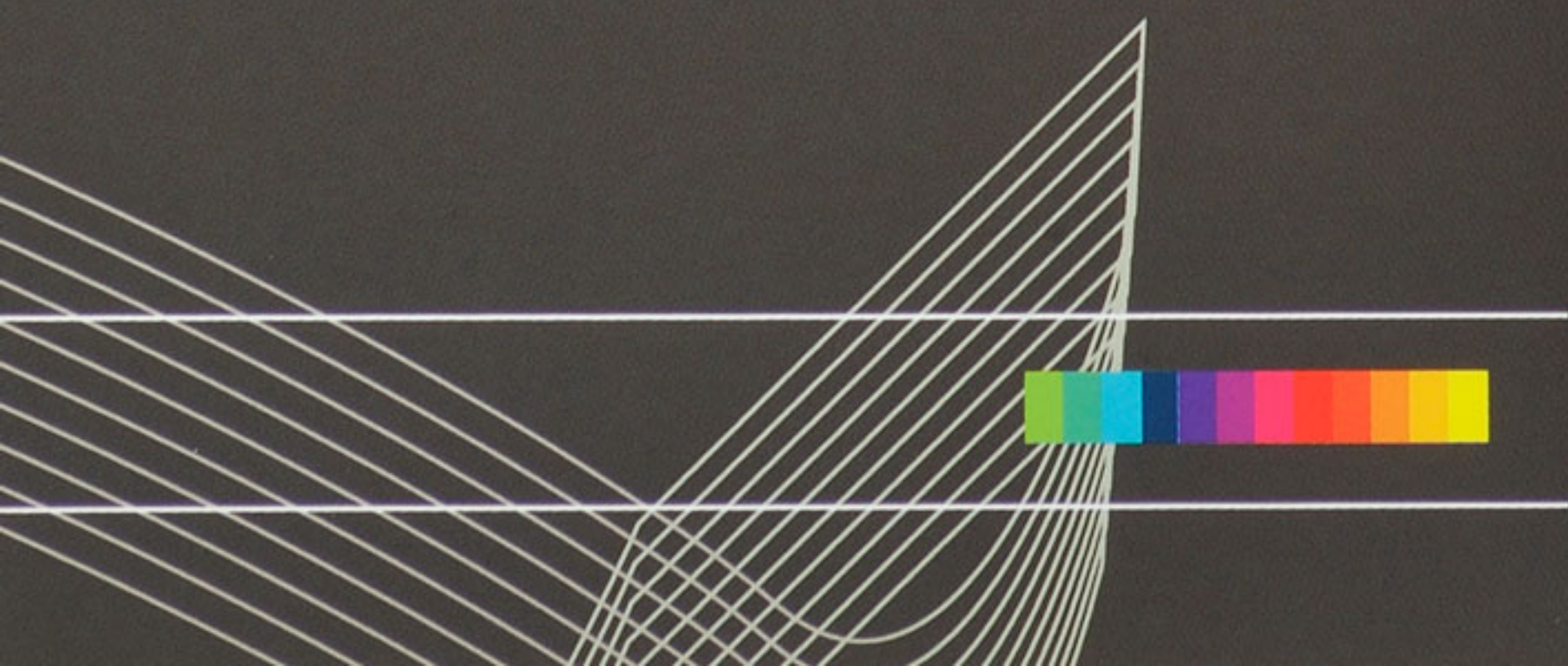
951 Blue Green



950 Ocean Blue

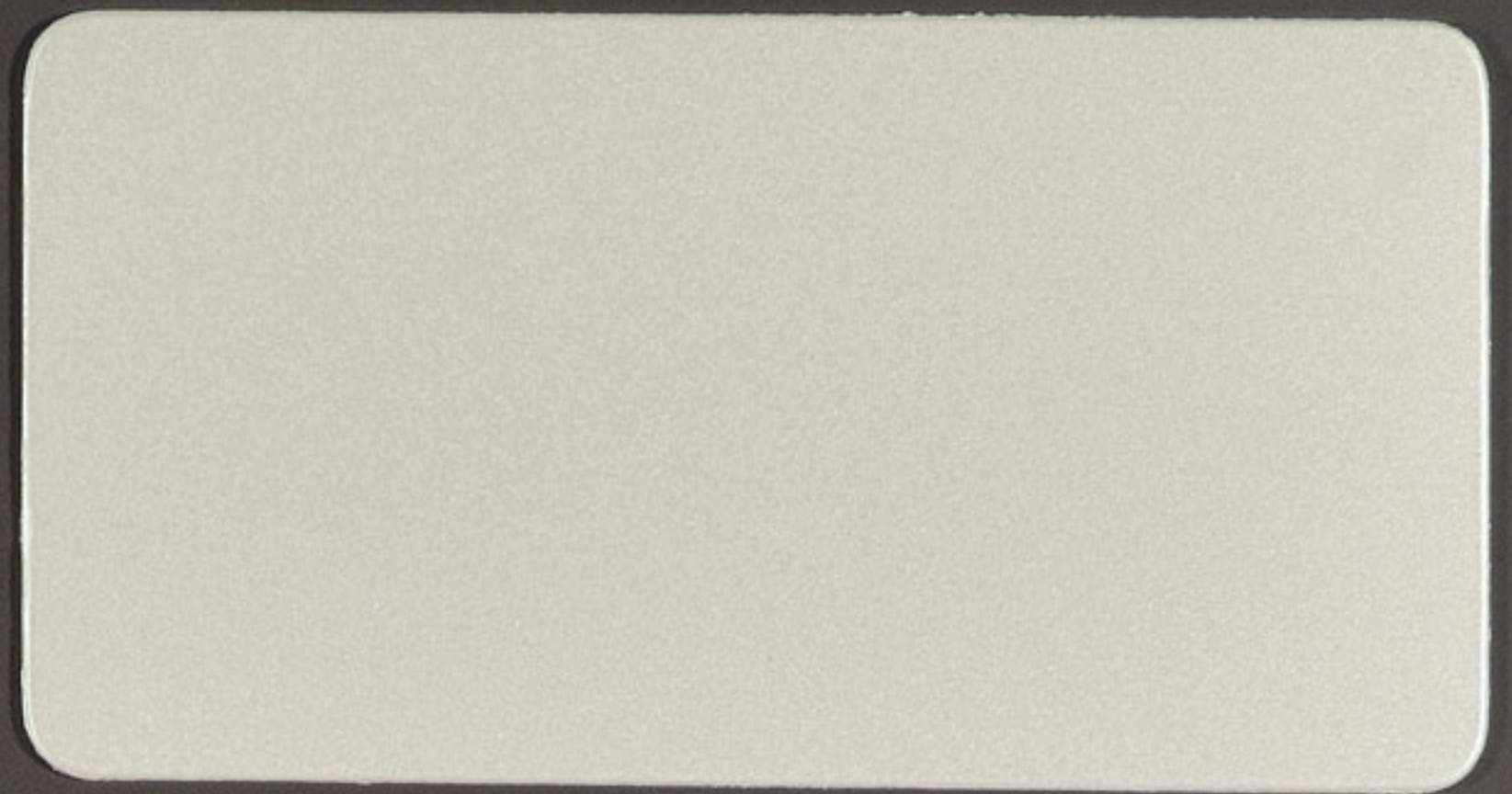


701 White Blue





955 Anodised Look C0/EV1



953 Anodised Look Silver C0



958 Anodised Look C31



960 Anodised Look C32



957 Anodised Look Mid Bronze C33



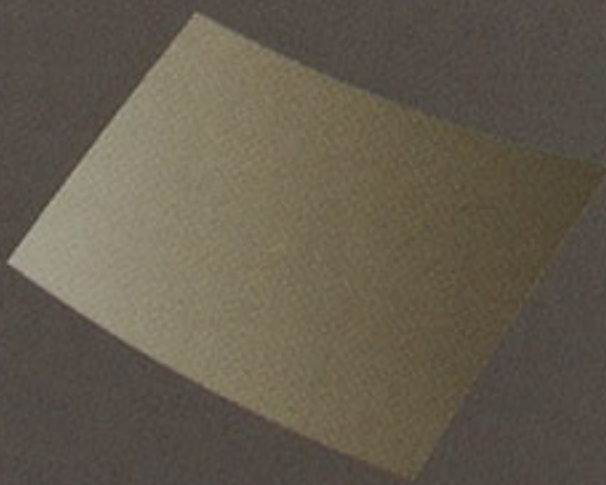
956 Anodised Look Bronze C2



954 Anodised Look Black C35



959 Anodised Look C34



Design tool for powerful building envelope solutions

The presented colour shades are based on metal chips, cut out from coated aluminium coils. As a consequence, they are well placed as colour matching samples. As with all coating procedures, especially for metallic colours, there might be a small degree of colour variation from batch to batch.

In order to ensure colour consistency, we recommend placing a project order in one batch. All metallic and Tx colours have to be installed following the arrow direction printed on the protective film and on the back side of the panel & coils in order to avoid colour variation.

The enclosed colours are available in 1250mm standard width. For tailor made projects special widths are available with a minimum quantity of 500m² per width and thickness.

For ENF™ and orofe® products the enclosed colours can be ordered in standard widths 1200/1250/1500mm, starting from minimum order quantity of 1500m² per width and thickness.

958 Anodised Look C31

Elval Colour

3rd Km Inofyta Peripheral Rd.

32011, Saint Thomas, Viotia, Greece

tel: +30 22620 53564, fax: +30 22620 53581

ecs@elval-colour.com

www.elval-colour.com

